

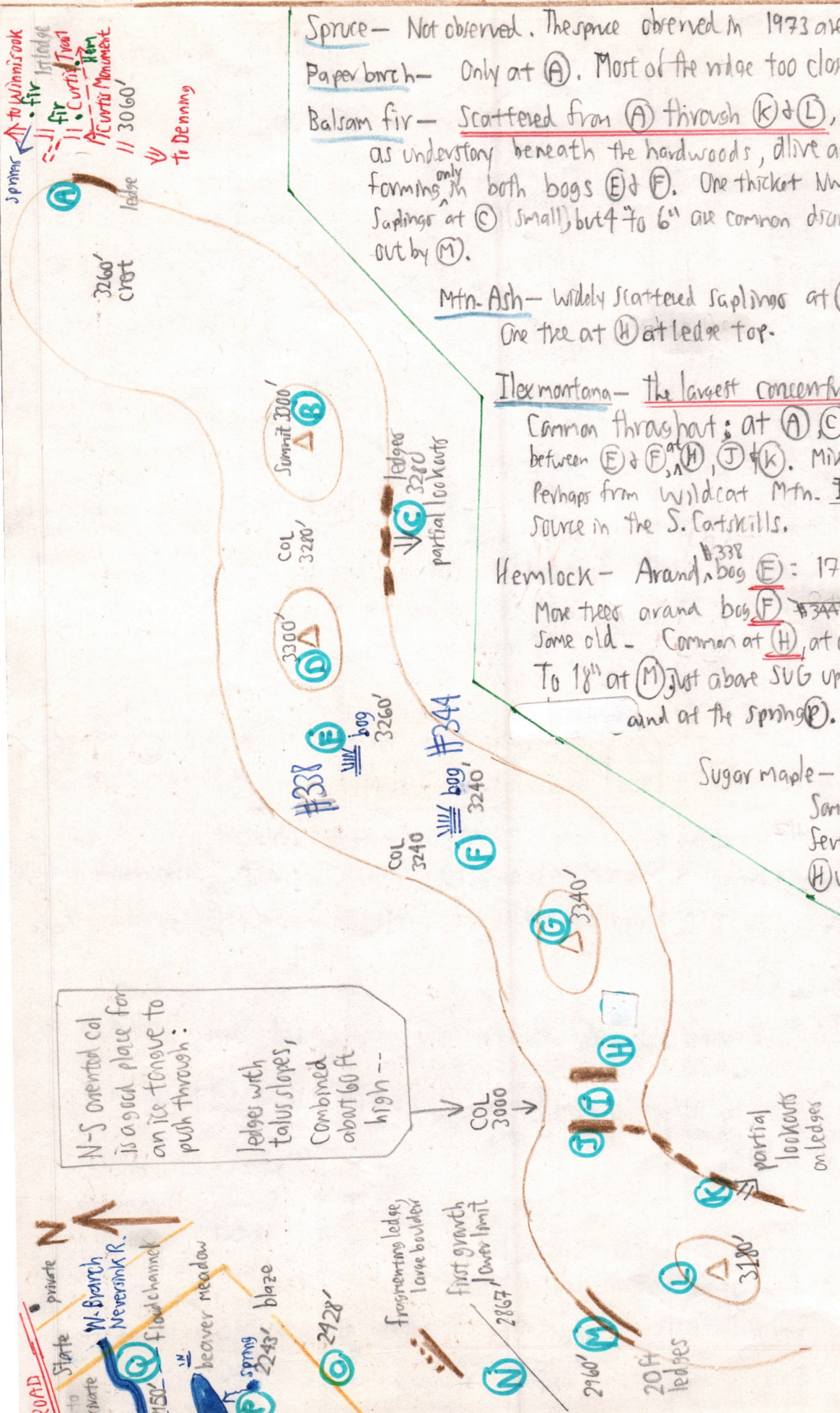
# WILDCAT MTN.

Highlights

6/14/85 167-1

Lee McAllister  
Ty Cochran  
Bill Kriemvis

(all 3500 Club)  
Delphin  
Cathy Balthazar



Spruce - Not observed. The spruce observed in 1973 are probably just N of (A). No more.

Paper birch - Only at (A). Most of the ridge too closed-canopy for PB.

Balsam fir - Scattered from (A) through (K) & (L), most usually along the ridge as understory beneath the hardwoods, live and dead. Abundant & thicket-forming <sup>only</sup> in both bogs (E) & (F). One thicket NW of (A) seen but not explored. Saplings at (C) (small), but 4 to 6" are common diameters. present in col (I), but out by (M).

Mtn. Ash - widely scattered saplings at (A) & (E) & (C). One tree at (H) at ledge top.

Ilex montana - the largest concentration in the Catskills!! Quite common throughout; at (A), (C), (E), (F), abundant on slope between (E) & (F), (H), (J) & (K). Mixing with Nemo at (E) & (F). Perhaps from Wildcat Mtn. Ilex montana has its seed major source in the S. Catskills. In flower 6/14/85. At (N).

Hemlock - Around bog (E) = 17", 12" + seedlings. Max trees around bog (F) ~~#344~~ of varying size, some young. Some old. Common at (H) at crest of ledge. On Summit (L). To 1 1/2" at (M) just above SUG upper limit. Again at the blaze (O) and at the spring (P).

Sugar maple - Several at summit (B) about 5" DBH. Some above bog (F) on ascent to (G). Several at top (G), and below (G) toward (H) up to 20" DBH. Reenter at (M), but uncommon down to (P) possibly due to bouldery slopes with frequent ledges dominated by B & YB. with ASH at

White ash - Scattered in the Winnisook Notch (see hike 6/10/85 up Little Slide) and from the new Slide trail head to just below the new Slide trail - Denning Turnpike Junction. Again below (N) at 2867 ft.

167-2

## Elevations

Pressure	$\Delta p$	map elev	$\Delta$ elev	Calc elev	site	Slide Mtn. Trail Head	Time
28.47"	0.00	3060	00	3060	Curtis Monument		10:08
28.38"	0.09	—	84	3144	top of 1st ledge on Wildcat	(A)	11:00
28.25	0.22	—	205	3265	lookat		
28.20 COL	0.27	3300	252	3312	3300' knob (E)	(B)	
		3280			lunch lookat	(C)	12:30-1:00
28.21	0.26	3300	243	3303	Knob (W)	(D)	
28.27	0.20	3260?	187	3247	1st bog, #338	(E)	1:30
28.30	0.17	3240	159	3219	2nd bog, m col, #344	(F)	
28.17	0.30	3340	280'	3340'	Summit	(G)	2:10
28.34	0.92	—	776	3196	kill head		
28.46	0.80	—	675	3095	hemlocks	(H)	
28.56	0.70	3000	591	3011	COL	(I)	2:54
28.50	0.76	—	641	3061	ledge top	(J)	
28.38	0.88	3180	743	3163	W knob	(L)	4:00 to 4:15
28.62	0.64	—	540	2960	SUG, hreshet	(M)	
28.73	0.53	—	447	2867	stumps begin (logged ca-1950?)		
29.07	0.19	—	160	2580	frag ledge - big baldern	(N)	
29.12	0.14	—	118	2538	ASH		
29.27	-0.01	2450?	8	2428	blaze	(O)	
29.47	-0.21	—	177	2243	spring	(P)	
29.58	-0.32	2420?	270	2150	beaver meadow on Neverink flood plain	(Q)	5:30
29.26	0.00	2420	0	2420	Trail head for Slide Mtn.	On road	5:50

Basswood - 2 trees observed at 2417 ft above the Hairpin on 6/10/85 - none on Wildcat.

Black Cherry - Abundant from (A) through (L) except at bogs (E) & (F). Repro. often heavy <sup>as at (G)</sup>. Dominant at (B), to 22" DBH at (D), to 33" DBH (partly dead) between (E) & (G), dominant at (G), dominant at (K). 27" DBH at (M).

Red maple - At (A), (B), (D), (E), (F) & (L).

Beech - At (A), (B), (G), (I), (J), dominant at (N) one with horizontal rounded ridges as on Hill NE of Sugarbush Hill at Paul Smiths.

Yellow birch - at (A), one dead 42" DBH at (B), (D), (G), (I), (L), dom at (N), 1 at (P). 36" at (J)

CARPINUS - between Neverink & Highway near (G)

Azalea - in flower at (C), (E), (K).

V. coccinea - bog (E)

Nemophila - bogs (E) & (F).

RG - (E), (A), (M)

VA - thrushart but especially between the bogs.

Hamamelis - Highest elev (!) in Catskills at Lookat (K) ca. 3160 feet

PIN - at (C), (K)

Amelanchier - at (K)

Striped & Mtn maples:

Common thrushart but MO especially abund & large in the old logged area at (N) & (O), probably following logging ca. 1950?

Ground Cover:

CURTIS MONUMENT: UVUL

(A): LL, OX, MC, ANI, \$  
DP glades

(B): SM,

(C): Open DP glades

(D): Lyco-annot.

(E): Vacc ang, Curtis, Sphag,  
CX bunn?, Cinn fern,  
Bazz., Di. thelyp, Vacc

(F): Sphag, CX, Cinn fern,  
Curtis, TB, Lyco obs.

(H): Bazz. abn on ledges  
toward (I)

(I): DP, OX, RS, TB, SM, \$,  
abn bryos. on boulders  
& fruticose lichens.

(J): UVUL

(K): Polypody, Vacc ang x myr?

(M): Lyco annot.

(N): Aris besms with ASH,  
OX, VV

(P): OX, TIAR, IMP, ARTS,  
D DISTJUNCTA, BRACHYTHECIUM  
OR BRVHMA

(Q) Flood plain: VV, Gymnocarpium, Athelyp, IMP, NYF

Geology & Soils

Conglomerate boulders at (B).

Blowdown "pancakes"

12" & 18" at (C).

No chipmunks on ridge since till is too shallow  
for burrows.

18" cake at (D)

18" cake at (G)

12" cake at (G) with abn. ss flags.

Ravine head barely 1ft deep betw. (G) & (H).

Col at (I) has 30 ft high ledges on both sides  
with equally high talus slopes beneath.

Probably ice maced due S through here.

Cake 12" at (J).

36" cake below (Q) blaze.

Open water about 5 ft across at Bog (E)

General observations

Canopy height 35 to 40 ft. at (B).

Views from (C) & (K) to Table & Van Wyck Mts. Van Wyck has no visible conifers  
except a hemlock grove on NE slope above Tray Mill Brook.

Rediff at (C)

Stumps (3 of them) at 2867 ft at (N) and more below, <sup>at blaze (Q)</sup> but no evidence of log roads. Logging  
might have been ca. 1950.

From Lee & Ty:

Bee Balm above Rider Hollow  
trail head, below lean-to  
Black Dome has 2 spruce about 20 ft  
S of trail, 50 to 100 W' of  
look at spur trail to S